

BA CALVING & FEEDING EQUIPMENT

For All Your Calf Rearing & Mobile Feeding Needs





Since late 2024, BA Pumps & Sprayers are proud to manufacture and supply Tokoroa Engineering's trusted range of products. For years, Tokoroa Engineering has been synonymous with designing and producing durable, high-quality trailers and feeders, purpose-built for New Zealand's dairy farmers. Our renowned calf trailers, feed trailers and Milk Bar™ mobile calf feeders have become mainstream on farms nationwide, valued for their ability to perform in even the toughest conditions.

At our modern manufacturing facility in Hautapu, Cambridge, we are dedicated to continuing Tokoroa Engineering's legacy of quality and reliability.

Whether you're in need of rugged trailers, robust feeders, or essential spare parts, our combined expertise ensures that we continue to deliver practical, efficient solutions to meet the needs of New Zealand farmers. Together, we are committed to supporting your success with reliable, locally made equipment designed to keep your farm running smoothly.

Yours sincerely,
Mark, Penny, and Guy Rendle



GET IN TOUCH FOR ALL YOUR MOBILE CALF REARING NEEDS
0800 833 538 | orders@bapsnz.com





FEED TRAILERS

- Super heavy-duty plastic trough with bung.
- Troughs are not bolted to the frame to minimise the chance of damage from knocks and make cleaning easier.
- Fully hot-dipped galvanized frames.
- 8 inch tractor grip 6ply tyres for load carrying.



CALF TRAILERS

- NZ Built - Tough and durable.
- Fully hot-dipped galvanized frame construction.
- Easy to clean - Hygienic mesh flooring, removable gates.



BA PRO SPREADER

- Purpose-built for reliable and consistent application of Causmag across pasture during calving.
- Also suitable for seed, bait and fertiliser application.
- Innovative hopper and aperture design ensures smooth flow and even spread.
- Durable, low-maintenance build.



CALFETERIAS

- NZ Built with UV-stabilised polyethylene tank.
- Easy to clean - Open trough design, no pipes or fiddly bits.
- Quick to fill - Large taps and 50L tank markings make filling accurate and fast. The opaque tank lets you quickly check the volume.
- Fitted with industry-leading Milk Bar™ Teats that mimic natural suckling to support digestion, reduce cross-suckling, and improve calf health.



4M/6M CALF FEEDER

FEATURES:

- 8 inch tractor grip 6ply tyres.
- Troughs deliberately not bolted to frame so knocks don't result in troughs being torn away.
- Super heavy-duty plastic trough with bung for easy drainage and cleaning.
- "Oily bush" steering pivot system requires no lubrication, reducing maintenance.
- Twin front wheels for improved load distribution and maneuverability.
- Hot-dipped galvanized frame for superior durability and rust resistance.
- Parking brake can be engaged when drawbar is raised vertically, out of harms way.



	4M CALF FEEDER	6M CALF FEEDER
PRODUCT CODE	ME-FDC4	ME-FDC6
TARE WEIGHT	200kg	300kg
GROSS WEIGHT	675kg (Palm kernel loaded)	1000kg (Palm kernel loaded)
HEIGHT	670mm	670mm
CAPACITY	675L	1000L
TROUGH WIDTH	800mm	800mm

GET IN TOUCH FOR ALL YOUR MOBILE CALF REARING NEEDS.

CALL OR EMAIL OUR TEAM:

**P: 0800 833 538 E: orders@bapsnz.com
tokoroaengineering.co.nz**



4M/6M PREMIUM FEEDER

FEATURES:

- 8 inch tractor grip 6ply tyres.
- Fully hot-dipped galvanized frame provides excellent durability and longevity in tough, corrosive conditions.
- Super heavy-duty plastic trough with bung for easy drainage and cleaning.
- Troughs deliberately not bolted to frame so knocks don't result in troughs being torn away, and for ease of cleaning.
- Twin front wheels distribute the load evenly, improving traction and making tight turns easier.
- The "oily bush" pivot system offers smooth, reliable steering with minimal upkeep.
- Parking brake system automatically engages when the drawbar is raised.
- Walking beam tandem rear axle for load capacity and smooth travel (6M version only).



	4M PREMIUM FEEDER	6M PREMIUM FEEDER
PRODUCT CODE	ME-FDP4	ME-FDP6
TARE WEIGHT	250kg	440kg
GROSS WEIGHT	1250kg (Palm kernel loaded)	2000kg (Palm kernel loaded)
HEIGHT	800mm	800mm
CAPACITY	1570L	2400L
TROUGH WIDTH	1 Metre	1 Metre

QUICK HITCH 6M FEEDER

FEATURES:



- Gross Weight: 2000kg (Palm Kernel loaded).
- Capacity: 2400L.
- Frame height: 750mm.
- 12 inch tractor grip 6ply tyres.
- Fully hot dipped galvanized frame.
- Troughs deliberately not bolted to frame so knocks don't result in troughs being torn away, and for ease of cleaning.
- Super heavy-duty plastic trough with bung.
- Built with a 50mm towing eye.
- Feeds approximately 300 cows.

PRODUCT CODE	DESCRIPTION	L X W X H	WEIGHT
ME-FDQH	Quick Hitch Meal Feeder	7m x 1.2m x 0.75m	300kg

DRAWBAR 4M FEEDER

FEATURES:

- Tare Weight: 150kg.
- Gross Weight: 625kg (Palm Kernel loaded).
- Trough Width: 800mm.
- Capacity: 675L.
- Frame height: 610mm.
- 8 inch tractor grip 6ply tyres.
- Fully hot-dipped galvanized frame.
- Troughs deliberately not bolted to frame so knocks don't result in troughs being torn away, and for ease of cleaning.
- Super heavy-duty plastic trough with bung.
- Suitable for younger stock.



PRODUCT CODE	DESCRIPTION	L X W X H	WEIGHT
ME-FDDB	Drawbar 4M Feeder	4m x 0.8m x 0.61m	150kg

15 CALF TRAILER

FEATURES:

- Tare Weight 150kg.
- Size: 1900 x 1500mm (2.85sq metres).
- Deck Height: 560mm.
- 1 pen/1 door.
- Ideal for smaller calf groups.
- Easy loading and unloading.
- Equipped with a mesh floor that promotes excellent hygiene and simplifies cleaning.
- Built with a fully hot-dipped galvanized frame for long-term durability and rust resistance.

20/40 CALF TRAILER

FEATURES:

- 2 pens/4 doors.
- Transports up to 20/40 calves safely.
- Easy loading and unloading.
- Removable gates provide flexibility for different transport needs.
- Hot-dipped galvanized frame with 40mm pivot shafts in grease-less plastic bushes.
- Hygienic mesh flooring minimizes infection risks and ensures easy cleaning.
- Tandem walking beam axle for load carrying and a smooth ride.



15-CALF TRAILER



20-CALF TRAILER



40-CALF TRAILER

PRODUCT CODE	ME-CT15	ME-CT20	ME-CT40
TARE WEIGHT	150kg	270kg	450kg
L x W x H	2.7m x 1.5m x 1.5m	2.4m x 1.7m x 1.5m	3.5m x 1.65m x 1.5m
DECK AREA	2.85 m ²	4.20 m ²	8.14 m ²
DECK HEIGHT	560mm	580mm	600mm



MILK BAR™ CLASSIC RANGE

FEATURES:

- A 40, 50 or 60-teat feeder with a 500L molded tank.
- Single-axle design for easy transport across the farm.
- Durable and reliable - NZ Built with UV-stabilised polyethylene tanks and manifolds and hot-dipped galvanized frames.
- Front to back levelling system.
- Easy to clean - Open trough design, no pipes or fiddly bits. Teats are pulled through, so they won't move, and the whole unit completely drains.
- Quick to fill - Large taps and 50L tank markings make filling accurate and fast. The opaque tank lets you quickly check the volume.
- Fitted with industry-leading Milk Bar™ Teats that mimic natural suckling to support digestion, reduce cross-suckling, and improve calf health.



PRODUCT CODE	TEAT COUNT	AXLE TYPE	TANK SIZE	L X W X H	TEAT SPACING	WEIGHT	DRAWBAR LENGTH
MB40SC	40	Single Axle	500L	2.2m x 1.75m x 1.45M	140mm	145kg	1.55m
MB50SC	50	Single Axle	500L	2.2m x 1.75m x 1.45M	110mm	145kg	1.55m
MB60SC	60	Single Axle	500L	2.8m x 2m x 1.45M	110mm	157kg	1.25m

MILK BAR™ DELUXE RANGE

Ideal for larger operations or where distance is travelled

FEATURES:

- 40, 50 or 60 mobile teat feeder.
- 500L or 750L tank.
- Tandem axle design for enhanced stability and smooth towing.
- Front to back and sideways levelling gives all calves their share of milk.
- Two drain taps for quick and efficient cleaning.
- Round tank eliminates milk surge, improving stability and flow.
- Drawbar handle, guard and jockey wheel.
- Durable and reliable - NZ Built with UV-stabilised polyethylene tanks and manifolds and hot-dipped galvanized frames.
- Easy to clean - Open trough design, no pipes or fiddly bits. Teats are pulled through, so they won't move, and the whole unit completely drains.
- Quick to fill - Large taps and 50L tank markings make filling accurate and fast. The opaque tank lets you quickly check the volume.
- Fitted with industry-leading Milk Bar™ Teats that mimic natural suckling to support digestion, reduce cross-suckling, and improve calf health.



Our Deluxe Tandem range feature walking beams mounted to a sprung axle for stability when driving over bumpy terrain.

PRODUCT CODE	TEAT COUNT	AXLE TYPE	TANK SIZE	L X W X H	TEAT SPACING	WEIGHT	DRAWBAR LENGTH
MB40SD	40	Single Axle	500L	2.2m x 1.75m x 1.45m	140mm	145kg	1.55m
MB40TD	40	Tandem Axle	500L	2.2m x 1.75m x 1.45m	140mm	-	1.55m
MB40T750D	40	Tandem Axle	750L	2.8m x 2m x 1.65m	140mm	-	1.55m
MB50SD	50	Single Axle	500L	2.2m x 1.75m x 1.45m	110mm	145kg	1.55m
MB50TD	50	Tandem Axle	500L	2.2m x 1.75m x 1.45m	110mm	-	1.55m
MB50T750D	50	Tandem Axle	750L	2.8m x 2m x 1.65m	110mm	-	1.55m
MB60SD	60	Single Axle	500L	2.8m x 2m x 1.45m	110mm	157kg	1.25m
MB60TD	60	Tandem Axle	500L	2.8m x 2m x 1.45m	110mm	-	1.25m
MB60T750D	60	Tandem Axle	750L	2.8m x 2m x 1.65m	110mm	-	1.25m



MILK BAR[™] MOBILE FEEDER 100

The ultimate in Mobile Calf Feeders

FEATURES:

- Large numbers of calves requires extra functionality and the Milk Bar[™] 100 Teat Mobile Feeder is made for the job.
- Limitless steering axle and extra long drawbar.
- High spec 75 x 50mm box section steel chassis with suspension for an improved ride.
- Tandem axles at the rear for load carrying.
- Front to back as well as sideways levelling gives all calves their share of milk.
- Two tanks, each holding 550L with marked gradients and connected with 50mm taps & plumbing.
- Fitted with industry-leading Milk Bar[™] Teats that mimic natural suckling to support digestion, reduce cross-suckling, and improve calf health.

CODE: MB100





Control taps to fill manifolds from either tank.



Front to back and sideways levelling system.



Easy-to-clean open trough design.



High load carrying in tandem axle design.



Pull wires used to compress springs to achieve sideways levelling.



PRODUCT CODE	TEAT COUNT	VOLUME	MANIFOLD VOLUME	FRONT AXLE TRACK	REAR AXLE TRACK	L X W X H	WEIGHT
MB100	100	1100L	500L	1.18m	1.58m	7.1m x 1.8m x 1.2m	340kg

MILK KART 550L DELUXE

FEATURES:

- A 550L mobile Milk Kart with a 12V pump and a 10m hose & nozzle.
- Durable and reliable - NZ Built.
- 45cm diameter lid.
- Galvanised trailer.
- Drain tap for cleaning.
- 550L tank with marked gradient.
- Large carry tray.



CODE: MBMK550D (12V PUMP)
OR MBMK550C (NO PUMP)

PRODUCT CODE	DESCRIPTION	L X W X H	WEIGHT
MBMK550D	Milk Kart Deluxe	3.2m x 1.1m x 1.5m	175kg

MILK MIXER TRAILER 550L

FEATURES:

- 550L tank with marked gradient.
- 45cm diameter lid.
- Galvanised trailer.
- Drain tap for cleaning.
- Large carry tray.
- Circulating system to mix milk powder.
- 2" electric start petrol pump with a 10m hose and nozzle.



PRODUCT CODE	DESCRIPTION	L X W X H	WEIGHT
MBMIX550	Milk Mixer Trailer 550L	3.2m x 1.1m x 1.5m	220kg

MEAL SAVER

FEATURES:

- Holds 150kg.
- Opening height: 550mm. Total height: 720mm.
- Designed to keep meal dry and edible, ensuring minimal loss.
- Completely wind, rain, and pest proof.
- Counter balance lids that calves can easily lift with their noses.
- Fitted with skids.



CODE: MBMS

PRODUCT CODE	DESCRIPTION	L X W X H	WEIGHT
MBMS	Meal Saver	1.42m x 1.02m x 0.72m	23kg



BA PRO-SPREADERS

BA PRO-SPREAD TRAILED CAUSMAG SPREADER

Specifically designed for the application of Causmag, the BAF70 and BAF140 feature an innovative hopper and aperture design that also allows for effective spreading of products like urea and grass seed. Their compact build and low spinner height ensure reliable coverage across a range of conditions.

FEATURES:

- Galvanised frame and spinner disc for enhanced durability
- Polyethylene hopper and lid – lightweight and corrosion-resistant
- Spreader deflector shield helps prevent product build-up
- Grease-filled gearbox for smooth, low-maintenance operation



BAF70

BA PRO-SPREAD TRAILED FERTILISER SPREADER

BAF225 & BAF425 Fertiliser Spreaders

Compact and efficient, the BAF225 and BAF425 are purpose-built for fertiliser application. A low spinner height and dual outlet hopper ensure even distribution, while curved spinner fins deliver consistent spread patterns. Ideal for farmers and lifestyle block owners alike. Also suitable for Causmag application on larger farms.

FEATURES:

- Galvanised frame for maximum corrosion resistance
- Stainless steel spinner disc with adjustable fins
- Polyethylene hopper and lid
- Spreader deflector shield to reduce build-up and improve accuracy
- Clutch with single-lever control for aperture opening and drive engagement
- Grease-filled gearbox for smooth, low-maintenance performance



BAF225-C



BAF70



BAF140



BAF225-C



BAF425-C

PRODUCT CODE	TANK SIZE	DRY WEIGHT	DIMENSIONS (mm)	THROW WIDTH
BAF70	70L	2 x 25KG bags of causmag 1 x 40kg bag of urea	Wheelbase: 1260 Lid fitted height: 1100 Hopper height: 1100	Causmag at 15KPH - 2-2.25
BAF140	140L	4 x 25KG bags of causmag 2 x 40kg bags of urea	Wheelbase: 1260	Causmag at 15KPH - 2-2.25
BAF225-C	425L	9 x 40KG bags of urea	Wheelbase: 1640 Lid fitted height: 1408 Hopper height: 1300	Urea at 15KPH - 15
BAF425-C	425L	9 x 40KG bags of urea	Wheelbase: 1640 Lid fitted height: 1408 Hopper height: 1300	Urea at 15KPH - 15

SPARE PARTS CALF TRAILERS & FEEDERS

	ME-B-B Brake Bar 
ME-AX-4 4mtr Rear Stub Axle 40x275mm 	4536 LOCK NUT For Walking Beam / Steering Head 
ME-AX-CT Steering Head & Calf Trailer Axle 40x270mm 	4537 HEAVY WASHER For Walking Beam / Steering Head 
1507 Walking Beam Stub Axle 32x225mm 	ME-WH-TGL / ME-WH-TGR Wheel Tractor Grip Passenger Side (L) or Driver Side (R) 
ME-AX-DE Double Ended Steering Head Axle 32x410mm 	ME-WH-TURF Wheel Turf 
ME-WASH-Y Steering Head Washer Upper 40ID 	ME-WASH Steering Head Washer Lower 
ME-BUSH50 Walking Beam Bush 50mm long, 50 OD, 40 ID 	ME-RIMP Rim Painted 
ME-BUSH75 Steering Head & Calf Trailer Walking Beam Bush. 75mm long 	ME-WH-BK Wheel Bearing Kit 
ME-WB-6 Walking Beam 6mtr feeder 640mm 	ME-TR6 Trough replacement 6mtr 
ME-WB-CT40 Walking Beam Calf Trailer 700mm long with boss 	ME-TR-4 Trough replacement 4mtr 
ME-WB-CT20 Walking Beam Calf Trailer & Milk Bar™ Deluxe 640mm long with boss 	ME-TR-4C Trough replacement 4mtr Calf Feeder 
ME-DB-O Draw Bar Only 	ME-TR-6C Trough replacement 6mtr Calf Feeder 
ME-DB-C Complete Draw Bar 	ME-RIMG Rim Galvanised 
MB-FD-TH-KIT Rear Hitch Kit for Premium/Calf Feeders 	P10004-20 Steering Head Complete 

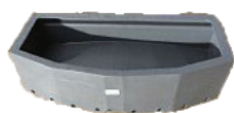
SPARE PARTS

MILK BAR™ CALFETERIAS



MB-MAN-8

Manifold 8 teat for MB100
& MB80



MB-LJ

Levelling Jack for levelling tank



MB-MAN-18D / MB-MAN-18P

Manifold 18 teat for MB80
Driver Side (D) or Passenger
Side (P)



MB-JW

Jockey Wheel Complete



MB-MAN-23D / MB-MAN-23P

Manifold 23 teat for MB100
Driver Side (D) or Passenger
Side (P)



MB-JW-WH

Jockey Wheel Only



MB-MAN-25

Manifold 25 teat for MB50



MB-IP

Inspection Port



MB-MAN-30

Manifold 30 teat for MB60



MB-BU32

Bung for MB50 & MB60



MB-TNK-500

500 Litre Tank



MB-BU391

Bung for MB80 & MB100



MB-TNK-550

550 Litre Tank



MB-SL

Screw Lid



MB-TNK-750

750 Litre Tank



MB-FOL

Fold Over Lid



MB-TS-500

Tank Sticker 500 Litre



MB-BC

Breather Cap



MB-TS-750

Tank Sticker 750 Litre



MB-SH

Suitcase Handle



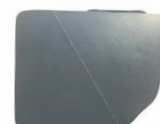
MB-SP3 and MB-SP4

Spring 3Leaf and 4Leaf



MB-MF

Mud Flap



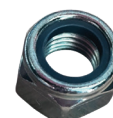
MB-DB-EX

Milk Bar™ Mobile
Drawbar Extension



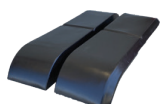
1138

Axle Nut



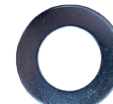
3034

Tandem Mud Guard



1131

Axle Washer



PROUDLY NZ MADE FOR OVER 35 YEARS

At BA Pumps and Sprayers, we like to keep things simple. Our business approach combines good old-fashioned Kiwi ingenuity with the world's best components, backed by nationwide support and service. As specialist suppliers and manufacturers of pumps, sprayers, spreaders and more, our capabilities ensure you have everything you need for farming.



GET IN TOUCH FOR ALL YOUR CALVING AND FEEDING FARM EQUIPMENT.

CALL OR EMAIL OUR TEAM

Phone: 0800 833 538

Email: orders@bapsnz.com

www.tokoroaengineering.co.nz

